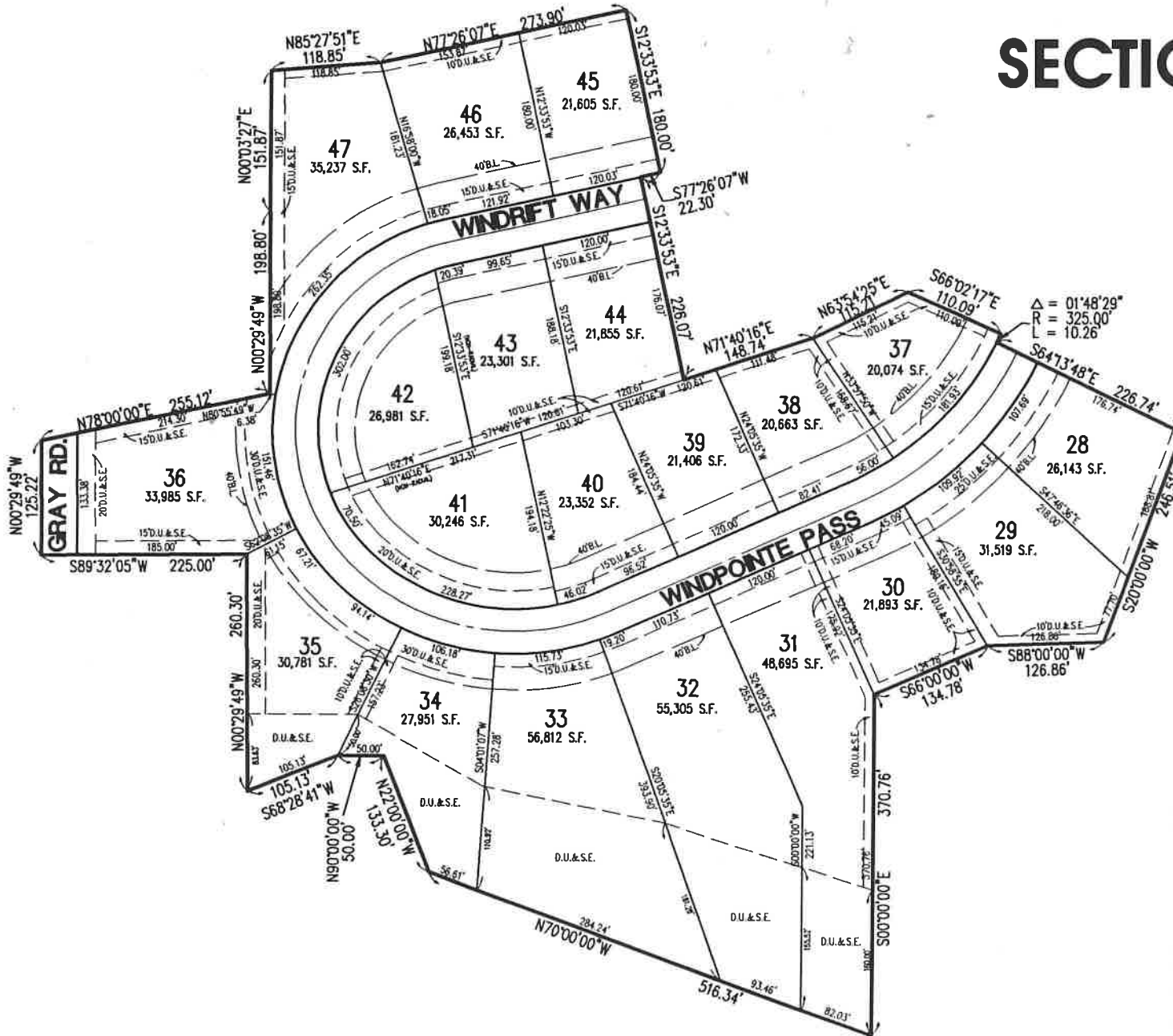


SECTION TWO



The most exclusive of the Waterstone neighborhoods, Windponte, is blessed by a heavy cover of native trees that blanket the entire community. Homesites on the planned large lake will be available in later sections. The lots generally range in size from one-half to three-quarters of an acre, with lot prices beginning in the \$70's. The anticipated price range of homes is \$380,000 to \$800,000.